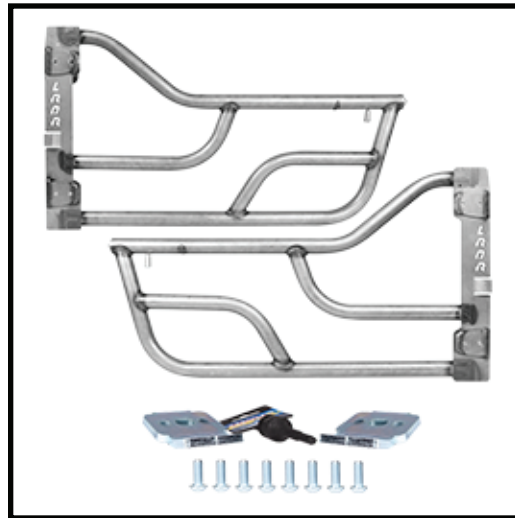


Instructions Created by an:



Ultimate Suzuki Samurai Tube Doors (SKU# SEB-TD)

Installation Instructions



CAUTION: Safety glasses should be worn at all times when working with vehicles and related tools and equipment.



Suggested Tools:

- Standard Screwdriver: Small
- Phillips Screwdriver #2
- Phillips Screwdriver #3
- Impact Drill W/ #2 and #3 Phillips Bits
- Allen Sockets: 4mm & 5mm
- Impact Driver W/#2 and #3 Phillips Bits (Optional)
- Hammer (if Impact Driver is Used)

FOR ADDITIONAL COPIES OF THESE AND OTHER INSTRUCTIONS GO TO:

www.lowrangeoffroad.com and click on the "INSTRUCTIONS" tab.



Step 1

Pop the side view mirror cover open using a standard screwdriver.



Step 2

Remove the (3) phillips screws using a #2 phillips bit in an impact drill.

Note: These screws can be hard to remove. If you do not have an impact drill, you could use an impact driver. Click [HERE](#) to see how to use an impact driver. Click [HERE](#) to purchase an Impact driver from LROR.



Step 3

Remove the side view mirror and set it aside.

Note: This mirror will be used with the new tube doors.



Step 4

Open the door.



Step 5

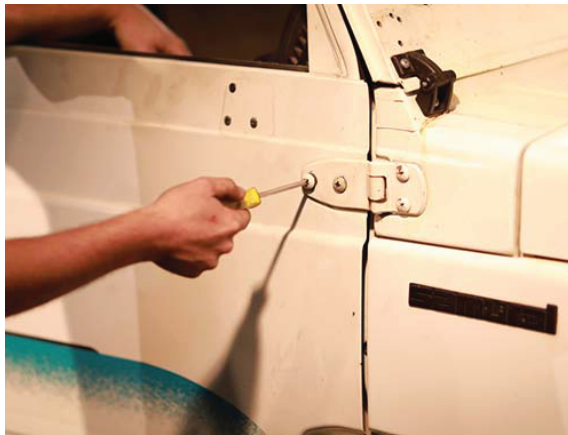
Disconnect the body side of the door strap by removing the (2) phillips screws using a #2 phillips screwdriver. Leave the door strap attached to the door.



Step 6

Roll the window down 2 or 3 inches so you will have a way to hold the door. Then close the door.

Note: It may be a good idea to roll the window all the way down to protect the glass during storage.

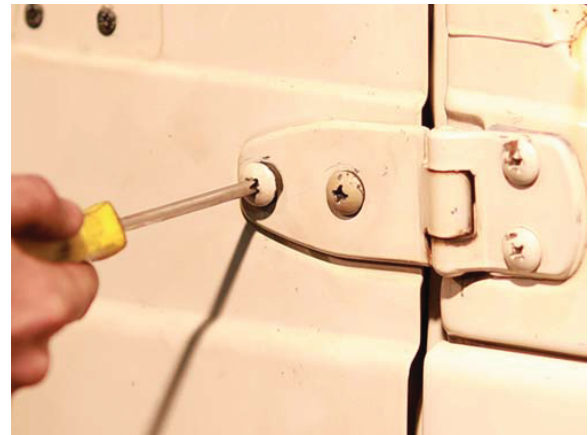


Step 7

LOOSEN the top (2) phillips screws using a #3 phillips screwdriver. Do not remove these screws yet.

Note: These screws can be very hard to remove. If you do not have an impact drill, you could use an impact driver.

Click [HERE](#) to see how to use an impact driver. Click [HERE](#) to purchase an Impact driver from LROR.



Step 8

Remove the bottom (2) phillips screws using a #3 phillips screwdriver in an impact drill.

Note: If there are spacer washers under these hinges keep track of them and where they were. It may be necessary to reinstall them with the new doors.





Step 9

Remove the top (2) phillips screws.

Note: If there are spacer washers under these hinges keep track of them and where they were. It may be necessary to reinstall them with the new doors.

Caution: Hold the door in place while removing these screws.



Step 10

While supporting the door with one hand, open the door with the other and set the door aside.



Step 11

Remove original striker plate and install LROR slam plate and install using original hardware.



Step 12

Position the new door in the door opening and latch it.



Step 13

Align the holes of the hinge and the tube door and install both of the supplied top screws. Leave these screws loose for now.



Step 14

Align the holes of the hinge and the door and install both of the supplied bottom screws. Leave these screws loose for now.



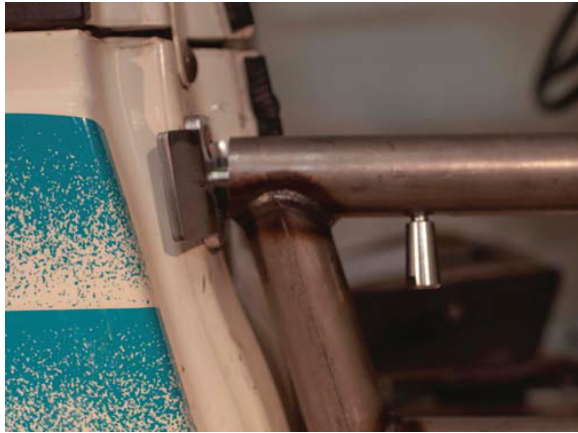
Step 15

Once all the screws are started, tighten all (4) screws using a 5mm allen socket.



Step 16

Open the door and then close it again. Be sure it latches and unlatches properly.



Step 17

The latch should hit the striker as close to the middle as possible. If it does skip to Step 19. If it does NOT, you will need to loosen the hinge screws and adjust the door up or down and retighten the screws.



Step 18

The door slam plate can be adjusted if necessary. To adjust, loosen the screws using a #3 phillips screwdriver, reposition the slam plate as needed, and retighten the screws.



Step 19

Check to see that the door latches and unlatches correctly. Adjust the hinges and or striker if needed.



Step 20

Position the mirror trim as shown and align the holes.



Step 21

Insert one of the supplied screws.

Note: Be sure to use the supplied screws. The OEM screws are not the correct length.



Step 22

Start the screw using a 4mm allen socket.



Step 23

Start the other (2) screws.



Step 24

Once all the screws are started, tighten them all.



Step 25

Snap the cover back into place . . .



Step 26

. . . and adjust the mirror.



Step 27

Install the second door following the same procedures as the first door.

Congratulations!

You have successfully installed the Tube Doors w/ Arm Saver Latch System by Low Range Off-Road. We hope these instructions have been helpful. If you have suggestions on how to make these instructions (or products) better, please email us at: sales@lowrangeoffroad.com



As always, If you experience any difficulty during the installation of this product please contact Low Range Off-Road Technical Support at 801-805-6644 M-F during regular store hours. Thank you for purchasing from Low Range Off-Road.



These instructions are designed as a general installation guide. Installation of many Low Range Off-Road products require specialized skills such as metal fabrication, welding and mechanical trouble shooting. If you have any questions or are unsure about how to proceed, please contact our shop at 801-805-6644 or seek help from a competent fabricator. Using fabrication tools such as welders, torches and grinders can cause serious bodily harm and death. Please operate equipment carefully and observe proper safety procedures.

Rock crawling and off-road driving are inherently dangerous activities. Some modifications will adversely affect the on-road handling characteristics of your vehicle. All products sold by Low Range Off-Road are sold for off road use only. Any other use or application is the responsibility of the purchaser and/or user. Some modifications and installation of certain aftermarket parts may under certain circumstances void your original dealer warranty. Modification of your vehicle may create dangerous conditions, which could cause roll-overs resulting in serious bodily injury or death. Buyers and users of these products hereby expressly assume all risks associated with any such modifications and use.

Revised 11/04/15© Copyright 2015 Low Range Off-Road, LC All Rights Reserved

