



#F1411 Installation Instructions 2005-2007 Ford Super Duty F250/350 4wd 4" Suspension Lift

Read and understand all instructions and warnings prior to installation of product and operation of vehicle.

Zone Offroad Products recommends this system be installed by a professional technician. In addition to these instructions, professional knowledge of disassembly/ reassembly procedures and post installation checks must be known. Minimum tool requirements include the following: Assorted metric and standard wrenches, hammer, hydraulic floor jack and a set of jack stands. See the "Special Tools Required" section for additional tools needed to complete this installation properly and safely.

» PRODUCT SAFETY WARNING

Certain Zone Suspension Products are intended to improve off-road performance. Modifying your vehicle for off-road use may result in the vehicle handling differently than a factory equipped vehicle. Extreme care must be used to prevent loss of control or vehicle rollover. Failure to drive your modified vehicle safely may result in serious injury or death. Zone Offroad Products does not recommend the combined use of suspension lifts, body lifts, or other lifting devices.

You should never operate your modified vehicle under the influence of alcohol or drugs. Always drive your modified vehicle at reduced speeds to ensure your ability to control your vehicle under all driving conditions. Always wear your seat belt.

» TECHNICAL SUPPORT

Live Chat provides instant communication with Zone tech support. Anyone can access live chat through a link on www.zoneoffroad.com.

www.zoneoffroad.com may have additional information about this product including the latest instructions, videos, photos, etc.

Send an e-mail to tech@zoneoffroad.com detailing your issue for a quick response.

888.998.ZONE Call to speak directly with Zone tech support.

» PRE-INSTALLATION NOTES

1. Special literature required: OE Service Manual for model/year of vehicle. Refer to manual for proper disassembly/reassembly procedures of OE and related components.
2. Adhere to recommendations when replacement fasteners, retainers and keepers are called out in the OE manual.
3. Larger rim and tire combinations may increase leverage on suspension, steering, and related components. When selecting combinations larger than OE, consider the additional stress you could be inducing on the OE and related components.
4. Post suspension system vehicles may experience drive line vibrations. Angles may require tuning, slider on shaft may require replacement, shafts may need to be lengthened or trued, and U-joints may need to be replaced.
5. Secure and properly block vehicle prior to installation of Zone Offroad Products. Always wear safety glasses when using power tools.
6. If installation is to be performed without a hoist, Zone Offroad Products recommends rear alterations first.
7. Due to payload options and initial ride height variances, the amount of lift is a base figure. Final ride height dimensions may vary in accordance to original vehicle attitude. Always measure the attitude prior to beginning installation.

Difficulty Level

easy 1 **2** 3 4 5 difficult

Estimated installation: 4-6 hours

Special Tools Required

30mm (1-3/16") Sockets

Heavy Duty Floor Jack and Stands

Tire/Wheel Fitment

Tire:

35 x 12.50

Wheel:

17x9, 4.5" backspacing

Kit Contents

Qty	Part	Qty	Part
2	Front Coil Spring	2	Sway Bar Link Nut/Washer
1	Front Track Bar	2	Sleeve - 0.750 x 0.090 x 1.575
2	Front Track Bar Bushing	2	Front Brake Line Bracket
1	Front Track Bar Sleeve	1	Bolt Pack - Brake Lines/Bump Stops
2	Radius Arm Drop Bracket	2	Front Bump Stop Extension
1	Bolt Pack - Radius Arm Brackets	4	Zip Ties
2	Sway Bar Link	2	5" Rear Block
2	Bushing - Sway Bar Link	4	5/8" x 3-5/8" x 15" U-bolts/nuts/washers

Important—measure before starting!

Measure from the center of the wheel up to the bottom edge of the wheel opening

LF _____ RF _____

LR _____ RR _____

Step 5 Note

If the taper does not release, try using a larger diameter pry bar. A loud pop will be heard when the taper releases. If available, a correct sized tie rod end tool can also be used to unseat the taper.

INSTALLATION INSTRUCTION

»» PRE-INSTALLATION NOTES

1. These vehicles, especially diesel models, are very heavy. Be sure that proper jacks/stands are used that are rated to handle the weight of the vehicle. Ensure that the vehicle is well supported before beginning the installation.
2. The factory front track bar bolt requires 405 ft-lbs of torque to be installed properly. Be sure you have the means of removing and installing this hardware properly. It is possible to install the hardware and torque to a more modest range (200 ft-lbs or so) and take the vehicle to a shop with the means to torque the hardware properly immediately after the installation is complete.
3. As a result of the location of the long radius arm suspension, support locations are limited. Use your best judgment while supporting the vehicle with sufficient strength stands at appropriate locations. The radius arms will need to move freely during this installation.

»» FRONT INSTALLATION

1. Park the vehicle on a clean, flat surface and block the rear wheels for safety.
2. Raise the front of the vehicle and proper support with jack stands under the frame rails - See Pre-Installation Note 3.
3. Remove the front wheels.
4. Support the front axle with a hydraulic jack.
5. Remove the track bar ball joint nut at the axle. **Figure 1** Thread the nut back on a couple of turns. Raise the axle a couple of inches with the jack. Place an appropriate sized pry bar between the axle mount and the track bar. **Figure 2** Lower the axle to pinch the pry bar between the track bar and axle mount. Take your hands off of the pry bar. Continue lowering the axle until the track bar unseats from the taper. Remove the nut and track bar from the ball joint. Save nut.



Figure 1



Figure 2

6. Disconnect the track bar from the driver's side frame mount. Remove the track bar from the vehicle. Save hardware.
7. Disconnect the front brake line brackets from the axle Figure 3 and frame Figure 4. Save hardware.



Figure 3

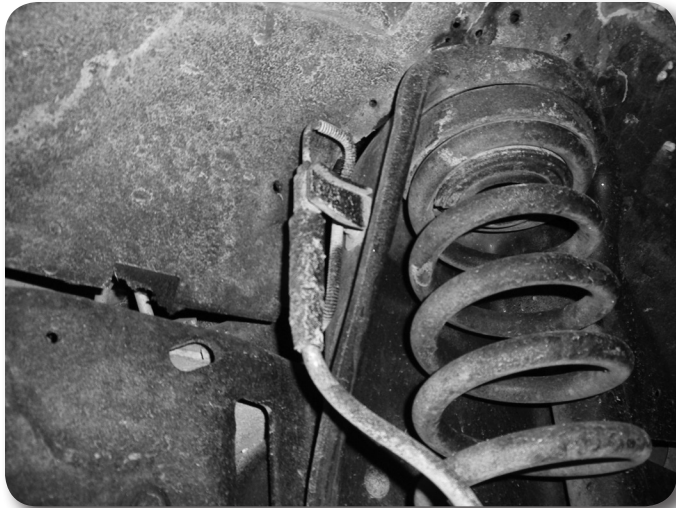


Figure 4

8. Remove the front axle hub vacuum lines retaining clips from the axle.
Figure 5A,B



Figure 5A



Figure 5B

9. Disconnect the front sway bar links from the sway bar and axle. **Figure 3** Remove the links from the vehicle and save the hardware/stem bushings. The links will not be reused.
10. Remove the ABS brake lines from the retaining tabs on the radius arms. **Figure 6** Carefully pull the plastic retaining clips free from the radius arm.



Figure 6

11. Disconnect the steering drag link from the pitman arm. Remove the cotter pin and castellated nut cap. Remove the nut and thread back on by hand a couple turns. Strike the end of the pitman arm near the drag link end to dislodge the taper from the pitman arm. **Figure 7** Remove the nut and the drag link from the pitman arm. Save all hardware.

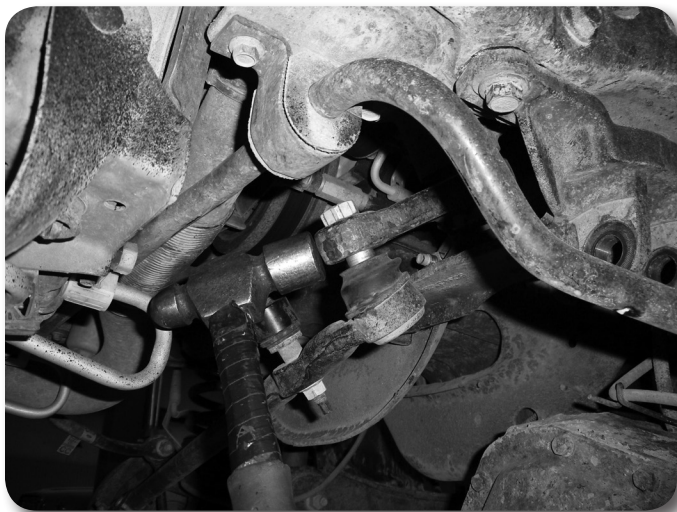


Figure 7

12. With the axle still well supported with a jack, disconnect the front shocks from the axle mounts. Leave the shocks attached to the frame, they will be used for added axle support during the next portion of the installation. Save axle hardware.
13. Carefully lower the axle and remove the factory front springs. Take care not to over-extend any lines/hoses. Save the upper spring isolator to be reinstalled with the new springs.
14. Reconnect the shocks to the axle with the original hardware. The shocks will help support the axle during the radius arm bracket installation.

15. Remove the factory bump stops from the retainer cups on the frame. **Figure 8A**
Remove the bolt holding the retainer cup to the frame and remove from vehicle. **Figure 8B**



Figure 8A



Figure 8B

Step 16 Note

The bump stop extension hardware is located in hardware pack #906.

16. Reinstall the retainer cups on the frame along with the provided 3" tall bump stop spacers. Fasten with a provided 8mm x 100mm bolt and washer. **Figure 9**
Apply Loctite to the bolt and torque to 15 ft-lbs. Be sure the flat lip of the retainer cup is oriented out toward the coil spring. Reinstall the factory bump stop into the retainer cup.



Figure 9

17. Locate and loosen the four radius arm mounting bolts at the axle. **Figure 10** Once again make sure that the axle is well supported by a jack.



Figure 10

18. Starting with the passenger's side, remove the upper radius arm mounting bolt at the axle. It may be necessary to temporarily remove the shock from the axle mount to remove the bolt. Remove the radius arm bolt at the frame **Figure 11** and lower the radius arm from the frame bracket. Save hardware.

Step 17 Note

The driver's side upper nut is welded to the radius arm.



Figure 11

Step 19 Note

Radius arm bracket hardware is located in hardware pack #430.

The new bolts will fit tight in the factory bracket. Installing them simultaneously will help to align the bracket holes. In some cases, because of varying tolerance the front factory bracket hole may need to be clearanced slightly.

19. Install the new provided radius arm bracket into the factory frame bracket. Align the hole in the bracket with the factory mount holes and install 3/4" x 5" bolts, nuts and washers in the holes. **Figure 12** With both bolts installed, torque hardware to 250 ft-lbs.



Figure 12

20. Swing the passenger's side radius arm up into the new bracket and fasten with the factory hardware. Leave hardware loose.
21. Repeat the bracket installation on the driver's side.
22. With both brackets installed, reattach the upper radius arm mount to the axle with the factory hardware. Leave hardware loose. All radius arm hardware will be tightened with the weight of the vehicle on the suspension.
23. With the axle still well supported, disconnect the shocks from the axle and frame. Save the axle mount hardware.
24. Lower the axle just enough to install the new coil springs along with the factory upper rubber isolator. Once installed, rotate the coil so it seats properly in the axle mount. Raise the axle until the coil is seated in the upper mount.
25. Locate the new front shocks, bushings and sleeves. Install the bushings and sleeves into the shock eyes. Install the shocks using the factory lower hardware and provided stem hardware..

Step 25 Note

The suspension will have to be compressed slightly to attach the shocks.

26. Torque shock hardware at axle to 100 ft-lbs. Tighten stem hardware until bushings deform.
27. Locate the new sway bar links, large hourglass bushings and 0.750 x 1.575 sleeves. Lightly grease and install the bushings and sleeves into the link eyes. Attach the new links to the axle with using the factory stem bushings and new provided 9/16" nut and washer. **Figure 14** Leave hardware loose.



Figure 14

28. Attach the eye of the new sway bar links to the outside of the sway bar with the factory hardware. **Figure 15** Run the bolt from the outside in and torque to 75 ft-lbs. Tighten the lower stem nut until the bushings begin to swell.



Figure 15

29. Pull the ABS wire connector free from the bottom of the inner fender near the frame. **Figure 16** Measure straight down from the original holes 3" and mark on the inner fender. **Figure 17** Drill (2) 1/4" holes at the marks and reinstall the ABS connector in the new lower position. If the connector retainer was damaged, use a provided zip tie to secure the connector.



Figure 16

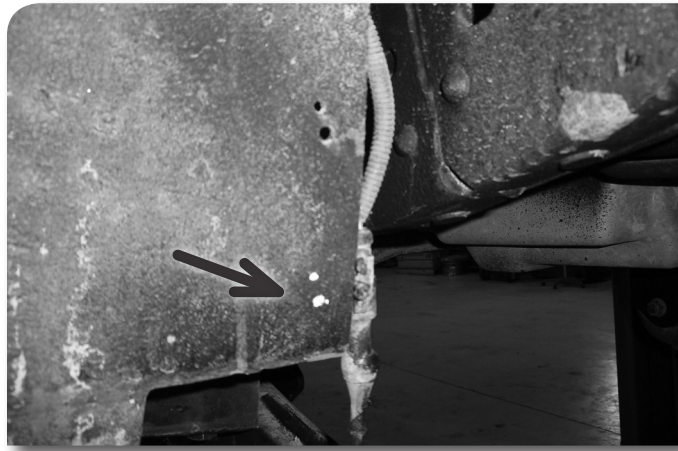


Figure 17

Step 31 Note

The driver's side vacuum line bracket can be bent up to reattach the line.

30. Reattach the plastic ABS wire to the retainer at the middle of the radius arm and to the front of the radius arm. Reattach all vacuum lines. Use the provided zip ties where needed.
31. Located the provided offset brake line drop brackets. Install the brackets to the original brake line mounts on the front of the coil mounts. **Figure 18** Use the original brake line hardware and torque to 10 ft-lbs. When installed the drop bracket stud will point toward the front of the vehicle.



Figure 18

Step 32 Note

Brake line hardware is located in hardware pack #442

Step 33 Note

The brake line bracket hardware is located in hardware pack #442.

Step 34 Note

New cotter pin is located in hardware pack #442.

32. Carefully reform the brake hard lines at the frame to attach the brake lines to the new drop brackets. Fasten with the provided 1/4" nuts and washers. Torque to 10 ft-lbs.
33. Reattach the steering drag link to the pitman arm. Torque nut to 148 ft-lbs. Install the original castellated nut cap and new 1/8" cotter pin.
34. Locate the provided new front track bar, track bar bushings and sleeve. Lightly grease and install the bushings and sleeve into the track bar.
35. Attach the new assembled front track bar to the original ball joint mount of the passenger's side of the axle. **Figure 19** Fasten with the factory nut and torque to 184 ft-lbs. The frame end will be attached with the vehicle's weight on the suspension.

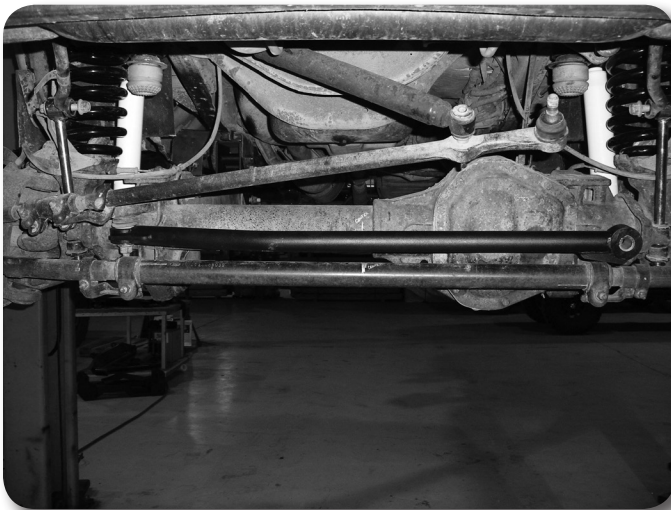


Figure 19

36. Install the front wheels and lower the vehicle to the ground. Torque lug nuts to 165 ft-lbs.
37. Bounce the front of the vehicle to settle the suspension. Torque all factory radius arm hardware to 220 ft-lbs.

38. Install the new track bar into the factory frame bracket. **Figure 20** Lightly grease the faces of the bushings to ease installation. Fasten with the factory hardware and torque to 405 ft-lbs.



Figure 20

39. Check all hardware for proper torque.

Step 39 Note

See pre-installation note #2.

The track bar end should fit tight into the bracket. If necessary, use a heavy rubber dead-blow rubber hammer to help align the end into the bracket.

» REAR INSTALLATION

1. Block the front wheels for safety.
2. Raise the rear of the vehicle with a jack and support with jack stands under the frame rails, just ahead of the leaf spring hangers.
3. Support the rear axle with a jack.
4. Remove the factory shocks. Save hardware.
5. With the axle well supported, remove the passenger's side u-bolts. Lower the axle and remove the factory winged block. **Figure 21**

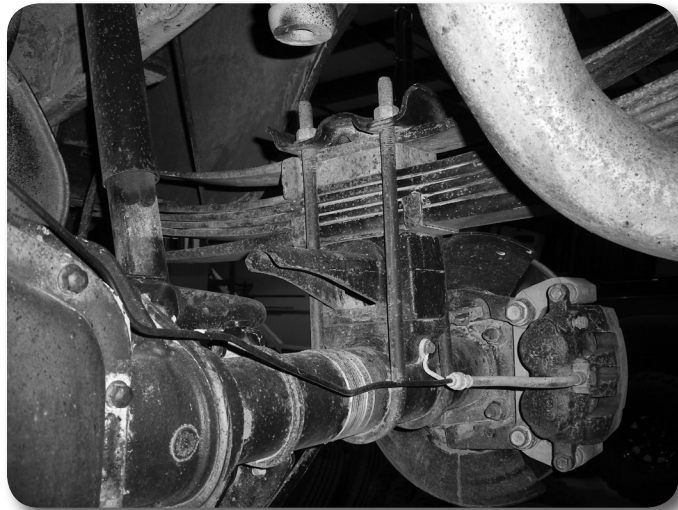


Figure 21

6. Continue to lower the axle just enough to install the new provided 5" winged block. Install the block so the wing points inward and align the pins/holes in the block, axle and spring. Raise the axle to seat the block.

Step 5 Note

The factory rear block will vary depending on the vehicle model. F-250s will have a 1-7/8" block while F-350s will have a 3-3/4" block. In both cases, replacing the factory blocks with the new 5" block will net the same level stance regardless of vehicle model.

7. Fasten the block and spring with the new provided u-bolts, high nuts and washers. Snug hardware. The final u-bolt torque will be done with the weight of the vehicle on the suspension.
8. Repeat the block installation on the driver's side.
9. Locate the provided new rear shocks, bushings and sleeves. Lightly grease and install the bushings/sleeves in the shock eyes. Install the shocks to the factory shock mounts with the original hardware. Torque the upper shock nuts to 45 ft-lbs and lower shock bolts to 65 ft-lbs. The shocks should be installed with the BODY side at the axle.
10. Install the wheels and lower the vehicle to the ground. Torque the lug nuts to 165 ft-lbs.
11. Bounce the rear of the vehicle to settle the suspension. Torque the u-bolts to 150 ft-lbs.
12. Check all hardware for proper torque.

»» **POST INSTALLATION**

1. Check all hardware for proper torque. Check hardware after 500 miles.
2. The steering wheel will need to be re-centered. This is done by adjusting the drag link collar near the passenger's side steering knuckle. Torque clamps to 41 ft-lbs. Thread the collar to lengthen the drag link.
3. Adjust headlights.

Post-Installation Warnings

1. Check all fasteners for proper torque. Check to ensure for adequate clearance between all rotating, mobile, fixed, and heated members. Verify clearance between exhaust and brake lines, fuel lines, fuel tank, floor boards and wiring harness. Check steering gear for clearance. Test and inspect brake system.
2. Perform steering sweep to ensure front brake hoses have adequate slack and do not contact any rotating, mobile or heated members. Inspect rear brake hoses at full extension for adequate slack. Failure to perform hose check/ replacement may result in component failure.
3. Perform head light check and adjustment.
4. Re-torque all fasteners after 500 miles. Always inspect fasteners and components during routine servicing.